

M100/M250/M500

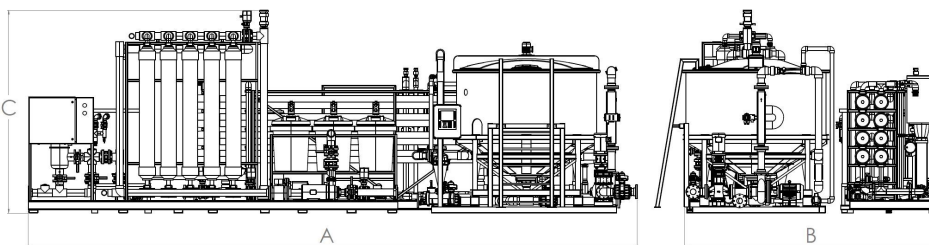
Eco Indirect Potable Systems

Product Information



M Series

The Eco Indirect Potable System is a significant improvement over the existing technology in conventional municipal wastewater treatment facilities. The Eco System has lower capital and operating costs, smaller physical footprint, is modular, scalable, can be installed with minimal lead time and produces a higher purity of water than current technology.



Physical Specifications

Model	Maximum Flow Rate	Dimensions (ft)		
		A	B	C
M100	100 GPM	30.97	11.75	10.93
M250	250 GPM	32.97	13.80	10.93
M500	500 GPM	32.97	13.80	10.93

Electrical Specifications

Model	Recommended Standby Generator	Power Requirements		
		Volts	Phases	Hz
M100	150 kW @ 1800 RPM	460	3	60
M250	150 kW @ 1800 RPM	460	3	60
M500	150 kW @ 1800 RPM	460	3	60

Estimated Operating Costs*

Model	Electricity		
	/kgal	/m ³	/day
M100	\$0.2290	\$0.0605	\$32.97
M250	\$0.2862	\$0.0756	\$103.04
M500	\$0.2862	\$0.0756	\$203.09

*Operating Costs are estimations based on cost of electricity per kWh of \$0.10

Features and Benefits

- Lower capital and operating costs
- Lower maintenance and servicing costs
- Smaller physical footprint
- Easily maintained and serviced
- One technician can operate the entire system
- Minimal moving parts for long lasting and reliable components
- The system is modular which can easily be adjusted to changing needs
- The system is scalable where additions to the system can increase capacity immediately
- Minimal lead times since modules are built offsite
- Generates no greenhouse gases
- No foul smells
- No leaks
- Processes wastewater at a fraction of the time
- Water quality is adjustable based on membrane selection

For more information on Eco Indirect Potable Systems, contact:

Eco Water Technologies Corp
150 N Federal Hwy, Suite 200, Fort Lauderdale, FL 33322

Tel: (833) 326-9287
info@ecowwc.com
ecowatertechnologies.com